



SWAM[®] Rotary Work Cell

The **SWAM[®] Rotary Work Cell** is built upon the **Complete Work Cell** concept requiring a single power and single air drop. Compact & mounded on castors for easy installation and work cell re-configuration. When consistency is demanded this Abrading System is ideal for texturing or de-burring a variety of components including **dental implants** and **surgical bone screws**. When long parts require complete coverage, a liner motion option can support one or more nozzles. Chucks can be designed to mask areas, such as the base of **dental implants**, that must not be sandblasted.

Rotary Work Cell features:

- **SWAM-Blaster[®]** Model LV-1 or XV-1 Micro Sandblaster for precise air pressure control and density of abrasive particles in the air stream
- Holds up to 20 pounds of abrasive
- Rotary Spindle with interchangeable rotating chuck or collet
- Abrading time, chuck rotational speed, nozzle speed and nozzle alignment are all adjustable
- Spent abrasive contained by built in dust collector
- Dust proof enclosure for controls and moving components
- Process control for consistent finishes from one part to the next
- Custom built from standard components for your application



**Job Shop Services
Available**

CRYSTAL MARK, INC.

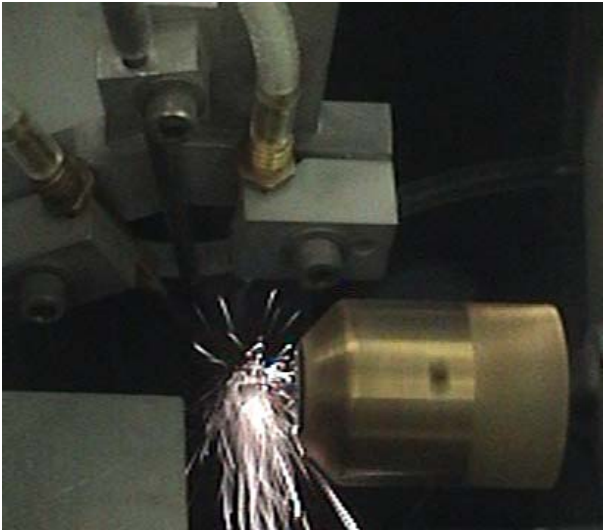
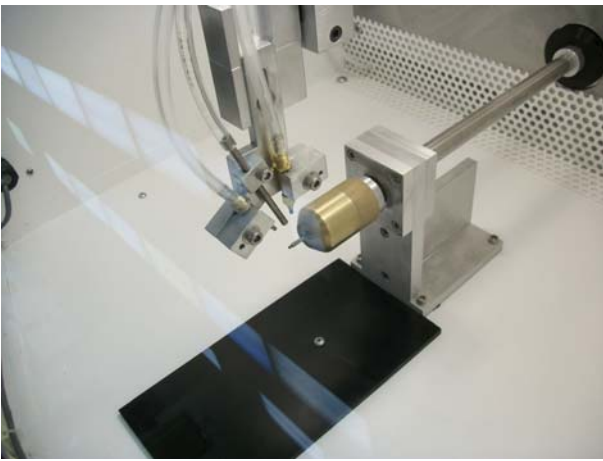
A SWAN TECHNOLOGIES CORPORATION

613 Justin Avenue Glendale, California 91201-2396

(818)240-7520 • (800)659-7926 • FAX (818)247-3574

www.crystalmarkinc.com • sales@crystalmarkinc.com

SWAM® Rotary Work Cell

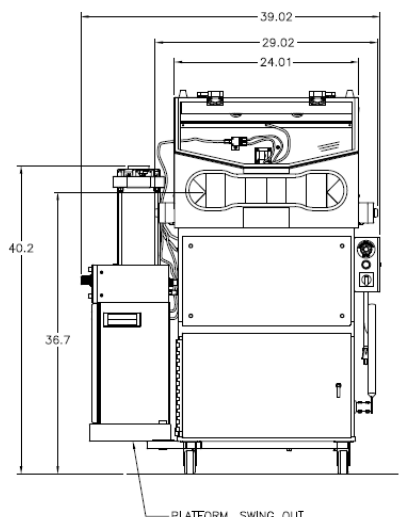
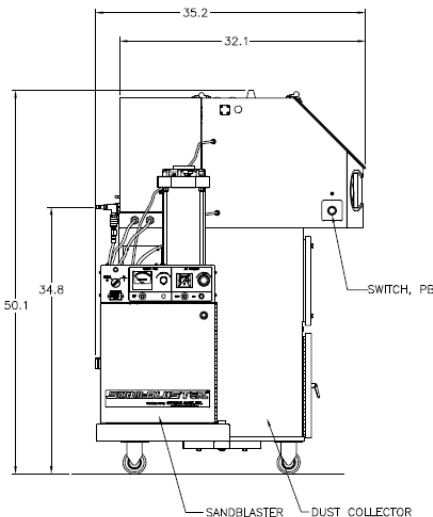
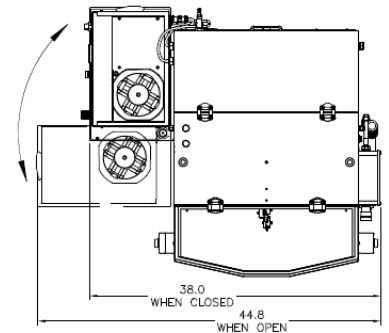


The **Model LV-1 and XV-1 Micro Abrasive Blasters** are designed for production lines and in the SWAM® Automated Systems. These Models feature a hour meter for SPC monitoring and tungsten carbide fittings for long service life. These machines hold approximately 20 pounds of aluminum oxide and have a separate mixing powder tank for a consistent powder feed rate from a full tank to empty.

Process begins with a component manually loaded into the chuck or collet. A foot switch Dual buttons are pressed outside of the work area and the process begins. the reciprocating or stationary nozzles uniformly abrade the rotating component. During this cycle, a sandblasted component is removed from the chuck and another to be processed can be put on to maximize the work done on the system.

Specifications:

Model / Part Number:	7620-1
Power:	115 VAC, 60 Hz, 15 amp 230 VAC, 50 Hz, 7.5 amp
Air Requirement:	40 psi (276 kPa) minimum 140 psi (956 kPa) maximum 10 sfcM maximum
Size:	53"L x 35"D x 56"H
Weight	550 pounds
Chamber Interior:	24" wide, 17" high x 19" deep
Window:	Tempered Glass
Dust Collector	1 horsepower blower Air Flow: 400 cfm Filter: 55 sq. ft. cotton sateen 67db sound level



CRYSTAL MARK, INC.

Micro Sandblasting solutions
For over 40 years
How can we help you?

613 Justin Avenue Glendale, California 91201-2396
(818)240-7520 • (800)659-7926 • FAX (818)247-3574
www.crystallmarkinc.com • sales@crystallmarkinc.com