



TURBO-Max™, TURBO-Station™ & TURBO-Cab™

Work Chamber and Dust Collector all in One.....

The **TURBO-Max™** and **TURBO-Station™** utilize the same filter and fan. Size is the difference. Both have the same:

- Efficient backward inclined impeller generating 258 scfm of vacuum to evacuate and collect the spent abrasive media
- Filter which is best used with abrasive media 25 microns and larger
- Easily removable drawer for collecting and disposing of spent abrasive powder
- Tempered glass viewing window
- Room on top for placing optional micro sandblaster



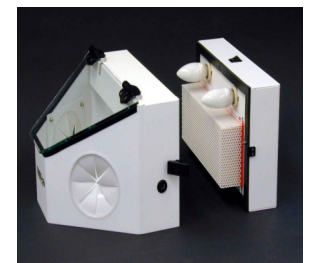
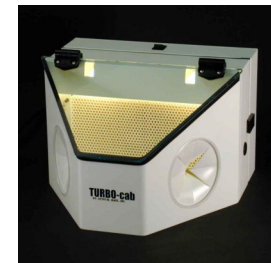
TURBO-Max™ with a SWAM –Blaster®
Model MV-2L



TURBO-Station™ with side view and open
clean out drawer

The **TURBO-cab™** is the perfect solution when work items are small and bench or counter space limited.

Dual fans generate approximately 50 scfm of vacuum to keep spent media or debris inside. The fan/light package can be separated from the front with 2 latches for easy cleaning. The filter is replaceable and is best for use with abrasive powders measuring 25 microns or larger. The viewing window is made of replaceable tempered glass.



Specifications	TURBO-Max™	TURBO-Station™	TURBO-Cab™
Power Requirements	115 VAC, 60 Hz, 1 amp 230 VAC, 50 Hz, .5 amp	115 VAC, 60 Hz, 1 amp 230 VAC, 50 Hz, .5 amp	115 VAC, 60 Hz, 1 amp 230 VAC, 50 Hz, .5 amp
Weight (approx)	102 pounds	60 pounds	25 pounds
Approx Size (OD)	27"W x 35"D x 19"H	20"W x 24"D x 16"H	16"W x 16"D x 10"H
Approx Work Area (ID)	24"W x 19"D x 18"H	20"W x 12"D x 14"H	16"W x 11"D x 10"H

CRYSTAL MARK, INC.

A SWAN TECHNOLOGIES CORPORATION

613 Justin Avenue Glendale, California 91201-2396

(818)240-7520 • (800)659-7926 • FAX (818)247-3574

www.crystalmarkinc.com • sales@crystalmarkinc.com